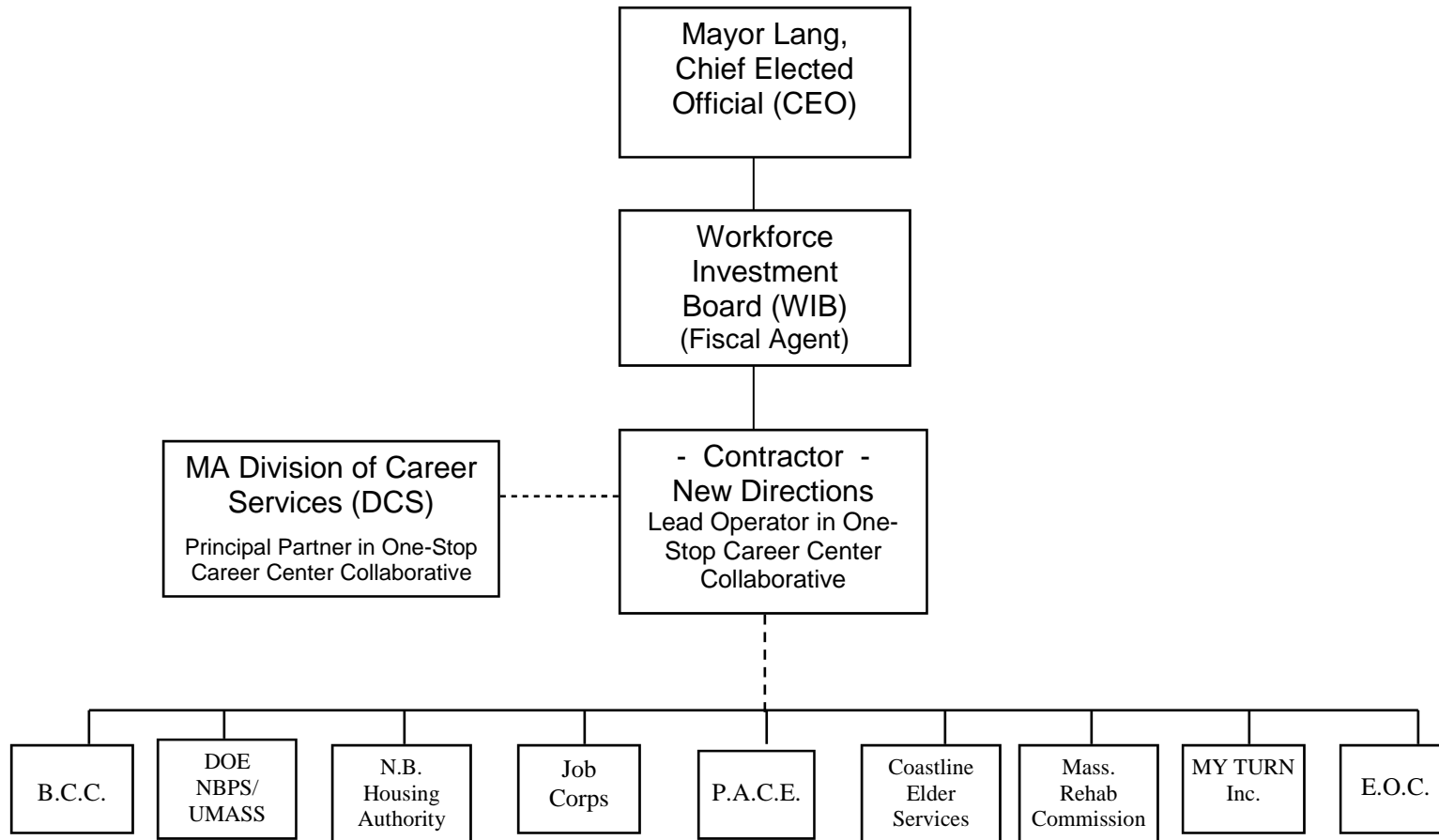


Greater New Bedford Workforce Development System



The solid line between the Mayor and the WIB denotes the WIB designated Fiscal Agent by the City, has financial accountability to the City. The City, as Grant Recipient, retains financial liability with the state. Solid line from the WIB to New Directions reflects the Board's policy making and oversight responsibility for the Career Center Operator in partnership with the Mayor.